



# Pastoral Livelihoods and Conservation in the Maasai Steppe Landscape, Northern Tanzania

*Presented by Adam Henson,  
USAID-GCP Symposium -- 15 September, 2009*

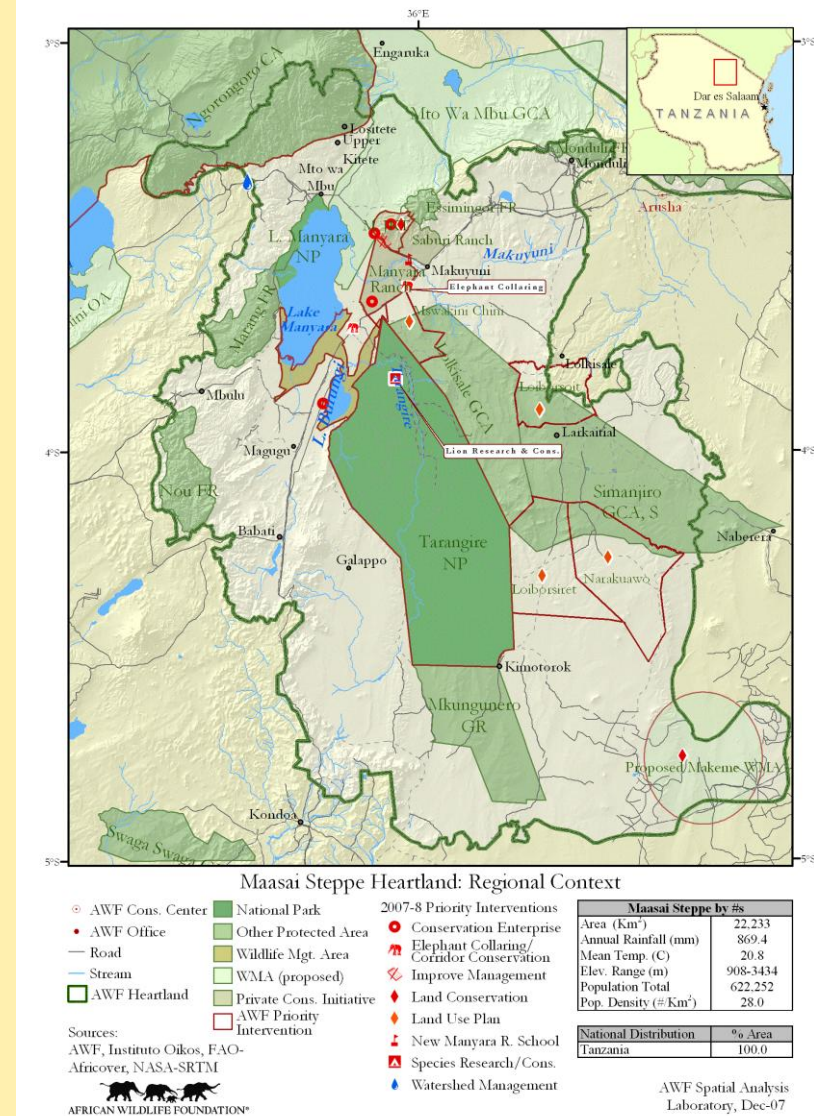
# Overview

## Project Location:

- Manyara Ranch in the Maasai Steppe Landscape, Northern Tanzania.

## Partners:

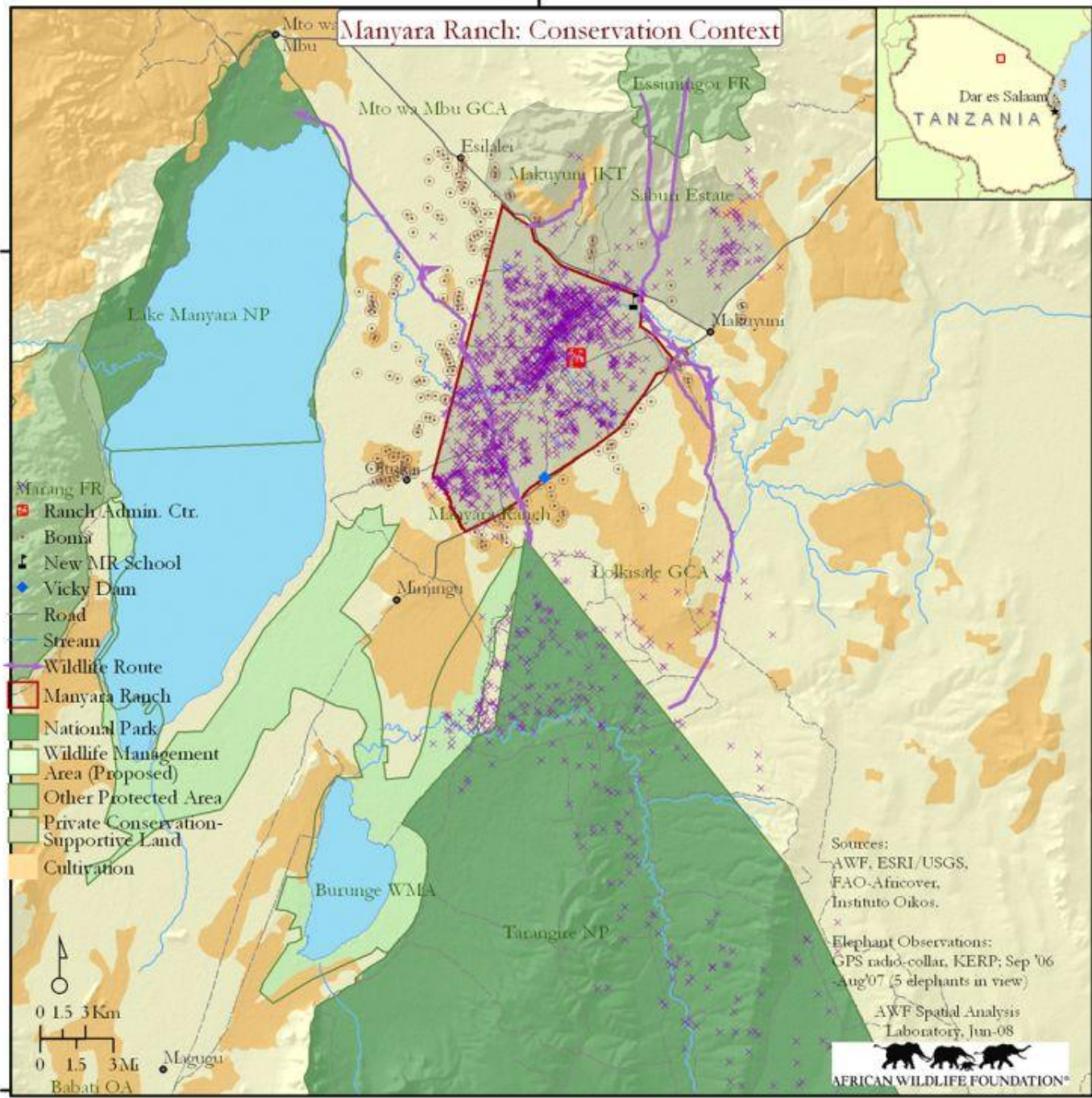
- *Local:* Tanzania Land Conservation Trust, 7 Villages (Esilalei, Oltukai, Mswakini Juu, Mswakini Chini, Makuyuni, Naitolia, and Olasit), RAMAT (local CBO), TZ Govt.
- *International:* USAID-Tanzania, USAID-GCP, Annenberg Foundation, TNC.
- **Overall goal(s):**
  - Maintain important wildlife corridor for Maasai Steppe landscape.
  - Establish a successful model demonstrating benefits of improving economic performance of livestock as a feasible and profitable livelihood, land and resource management strategy.



**USAID**  
FROM THE AMERICAN PEOPLE

# Manyara Ranch: Conservation Context

3°30'S



Sources:  
 AWF, ESRI/USGS,  
 FAO-Afucover,  
 Instituto Oikos.

Elephant Observations:  
 GPS radio-collar, KERP; Sep '06  
 - Aug '07 (5 elephants in view)

AWF Spatial Analysis  
 Laboratory, Jun-08



# Key Results

1. Key land unit secured for conservation;
2. Multiple use management regime implemented (wildlife and livestock);
3. Livestock operations modernized and market linkages being developed;
4. Conservation-compatible livestock practices implemented;
5. Diverse benefits stream under development;
6. Sustainability mechanisms aggressively built;
7. Social development—construction of new primary school.

# Lessons Learned

## **Lessons 1:**

Integrated strategy is critical;

## **Lessons 2:**

Build Local capacity;

## **Lessons 3:**

Develop successful model for replication;

## **Lessons 4:**

Sustained long-term effort needed.

# Future Plans

- Complete modernization of livestock operations on Ranch;
- Manyara Ranch tourism enterprise open for business;
- Continue to protect and manage Manyara Ranch for wildlife conservation and livestock;
- Ensure sustainability of ranch operations through livestock and tourism revenue;
- Work to leverage surrounding lands for conservation.



Thank you